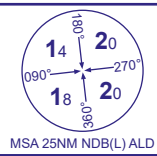


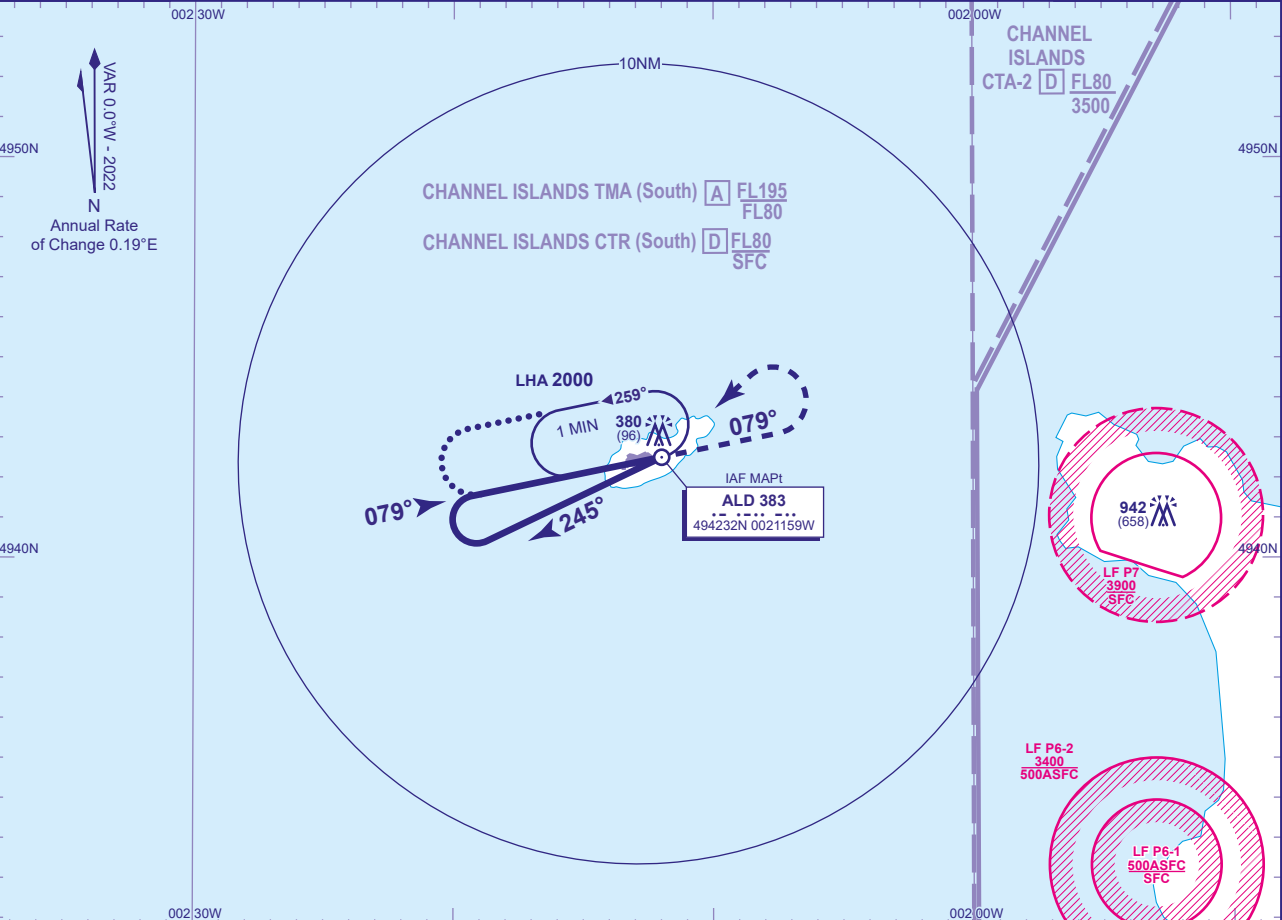
INSTRUMENT APPROACH CHART - ICAO

ALDERNEY
NDB(L)
RWY 08
(ACFT CAT A)

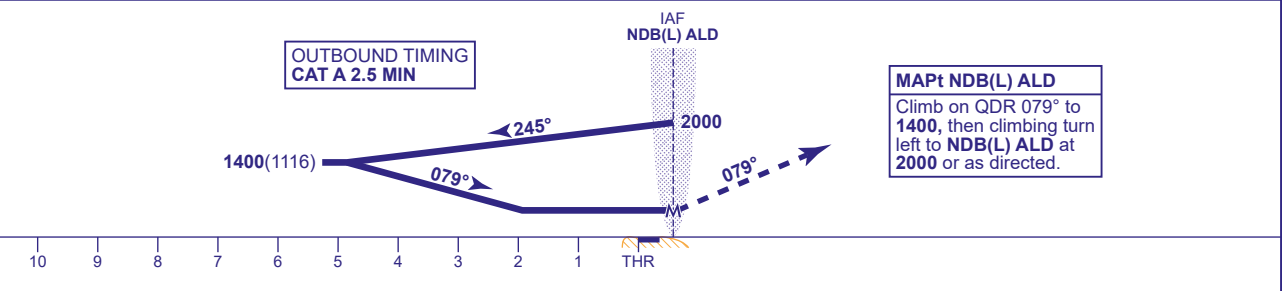


| | | | | |
|-----|---------|-------------------|-----------------------|-------------------------------|
| APP | 128.655 | GUERNSEY APPROACH | AD ELEVATION | 290 |
| TWR | 125.355 | ALDERNEY TOWER | THR ELEVATION | 284 |
| | 130.505 | ALDERNEY GROUND | OBSTACLE ELEVATION | 942 AMSL (658) (ABOVE THR) |
| | | | BEARINGS ARE MAGNETIC | |

TRANSITION ALTITUDE
5000



RECOMMENDED PROFILE Gradient 5.24%, 318FT/NM



| Aircraft Category | A | Rate of descent | G/S KT | 160 | 140 | 120 | 100 | 80 |
|--------------------|------------|-----------------|--------|-----|-----|-----|-----|-----|
| OCA (OCH) | Procedure | 680(396) | FT/MIN | 850 | 740 | 640 | 530 | 420 |
| VM(C)OCA (OCH AAL) | Total Area | 690(400) | | | | | | |

ALTERNATIVE PROCEDURE EXTENDED HOLDING PATTERN
Extend outbound leg of hold to 2.5MIN descending to 1400(1116). Turn left onto FAT, and when established descend to MDA.

CHANGE (12/24): MAG VAR AND ANNUAL RATE OF CHANGE. MAG TRACKS. NOTE REMOVED.